

## Technical data sheet

# FINAL SILICONE PLASTER

*Pasty silicone binder based top plaster*



<b>product description:</b>	Pasty decorative silicone binder based top plaster available in smooth and trowelled structure. It is water-repellent, UV and weather resistant with special additives that protect it from algae and mould.																							
<b>area of application:</b>	It is intended for decorative protection of façades and interior wall surfaces. Part of the <i>FINALIT S</i> and <i>FINALIT MV</i> thermal insulation systems. It can be used on concrete surfaces, smoothing compounds, old and new mineral plasters, plywood panels, fiber-cement and gyps-cardboard boards Not suitable for horizontal surfaces that maintain water. It is not suitable for horizontal surfaces where water remains, for wooden and metal surfaces and for surfaces painted with oil and alkyd coatings.																							
<b>product range:</b>	It is produced in white, but by applying the <i>Top Mix</i> system for tinting it is possible to achieve a wide range of colours from the Chromos-Svjetlost colour chart as well as many other colour charts on the market.																							
<b>packaging:</b>	25 kg plastic bucket																							
<b>product characteristics:</b>	Easy treatment Low water absorption Dry film protection from algae and fungi Great coverage For manual or mechanical treatment																							
<b>volatile organic compounds content (VOC):</b>	A(d) , 40 g/l; max. 25 g/l (HRN EN ISO 11890-1).																							
<b>Product characteristic according to EN 15824:</b>	<table border="1"> <tr> <td>Water vapour permeability</td> <td>V<sub>2</sub></td> </tr> <tr> <td>Water absorption</td> <td>W<sub>3</sub></td> </tr> <tr> <td>Adhesion strength</td> <td>≥ 0,3 MPa</td> </tr> </table>			Water vapour permeability	V <sub>2</sub>	Water absorption	W <sub>3</sub>	Adhesion strength	≥ 0,3 MPa															
Water vapour permeability	V <sub>2</sub>																							
Water absorption	W <sub>3</sub>																							
Adhesion strength	≥ 0,3 MPa																							
<b>material consumption:</b>	<table border="1"> <thead> <tr> <th>The structure of the final appearance</th> <th>Granulation / mm</th> <th>Coverage* / kg/m<sup>2</sup></th> </tr> </thead> <tbody> <tr> <td rowspan="5">Smoothed</td> <td>1.0</td> <td>1.5</td> </tr> <tr> <td>1.5</td> <td>2.2</td> </tr> <tr> <td>2.0</td> <td>2.9</td> </tr> <tr> <td>2.5</td> <td>3.5</td> </tr> <tr> <td>3.0</td> <td>4.1</td> </tr> <tr> <td rowspan="3">Trowelled</td> <td>1.5</td> <td>2.1</td> </tr> <tr> <td>2.0</td> <td>2.5</td> </tr> <tr> <td>2.5</td> <td>3.3</td> </tr> </tbody> </table>			The structure of the final appearance	Granulation / mm	Coverage* / kg/m <sup>2</sup>	Smoothed	1.0	1.5	1.5	2.2	2.0	2.9	2.5	3.5	3.0	4.1	Trowelled	1.5	2.1	2.0	2.5	2.5	3.3
The structure of the final appearance	Granulation / mm	Coverage* / kg/m <sup>2</sup>																						
Smoothed	1.0	1.5																						
	1.5	2.2																						
	2.0	2.9																						
	2.5	3.5																						
	3.0	4.1																						
Trowelled	1.5	2.1																						
	2.0	2.5																						
	2.5	3.3																						

\*the exact coverage depends on the properties of the substrate and on the finishing technique (the exact coverage must be determined by making of test filed on the object).

## Technical data sheet

# FINAL SILICONE PLASTER

*Pasty silicone binder based top plaster*



<p><b>preparation of the substrate:</b></p>	<p>Surface needs to be dry, firm (freed from weakly binding parts), without greasy stains and other impurities. All damaged and stained surfaces must be renovated according to the rules of the profession. Greasy areas should be cleaned with a <i>Kalijeva sapun</i> solution, and soiled areas with water jet under pressure. Substrates contaminated by algae and fungi should be treated with <i>Algenon</i> biocidal solution. After each wetting of the surface, it is necessary to ensure sufficient time for adequate drying. Application surface must be treated with basecoat undercoat <i>FINALGRUND UNI</i> in a shade of the plaster 24 hours prior to applying the plaster! An uneven substrate makes it difficult to structure the plaster, which can cause a poor final appearance, therefore the preparation of the substrate is extremely important. FINAL plaster in 10mm granulation may be successfully applied only on well-prepared substrates, so we recommend it only for processing smaller surfaces, decorative borders around windows and doors, cornices, etc. Damaged mineral substrates should be repaired and leveled with <i>Finalterm S</i> leveling compound and, if necessary, reinforced with <i>Final staklena armaturna mrežica</i>.</p>
<p><b>work conditions:</b></p>	<p>Air, material and substrate temperature must be higher than +5 °C and lower than +30 °C, while the relative air humidity must be lower than 80 %. The material may not be applied to sunlit surfaces (the scaffolding must be fitted with a screen to protect against the sun or rain) and during windy weather. Low temperatures as well as high humidity prolong the setting time and can result in uneven colour. High temperatures in summer shorten the working time of the paint.</p>
<p><b>preparation of the material:</b></p>	<p>Before use, mix the product in the original packaging with a slow-rotating mixer. If necessary (on an exceptional basis), the material may be diluted with pure water 1.5 dcl maximum) To much dilution may damage the properties of the material (treatment, coverage and plaster shade) and cause uneven distribution of granulates so the final appearance may seem messy and mottled. <b>Different production batches, as well as products mixed through the Top Mix system need to be equalized before use.</b> Mix the material from different buckets into one uniform mixture for a specific substrate.</p>
<p><b>material application:</b></p>	<p>The plaster is applied manually using a stainless-steel smoothing trowel or using a machine with thickness as close as possible to the diameter of the largest grain. In case of mechanical application, the instructions of the hardware manufacturer must be followed. Immediately or a few minutes after application, smooth the plaster with circular strokes with a hard, plastic trowel to achieve a smooth final structure, and to achieve a levelled final structure, smooth the plaster with circular, vertical or horizontal strokes. Regular cleaning of the structuring tool is essential! The plaster is applied with the “wet on wet” technique, continuously, without interruption, which is achieved by organizing a sufficient number of workers on the scaffolding and dividing larger wall surfaces into smaller parts with grooves, decorations, borders. Too much thinning or processing in strong wind can lead to poor structure, variegation and formation of microcracks. Any repair of the material during installation is not allowed (adding colorant, thinning). Soiled spots and tool must be cleaned immediately after finishing work. When carrying out the work, comply with construction regulations. In case of any questions, contact the sales and technical advisor of Chromos-Svjetlost.</p>
<p><b>Drying time of the applied material:</b></p>	<p>Touch dry: After 6 h (20 °C and relative air humidity 65%), depending on weather conditions. Rain protection is mandatory for at least 24 hours following the application of the final coat.</p>

Technical data sheet

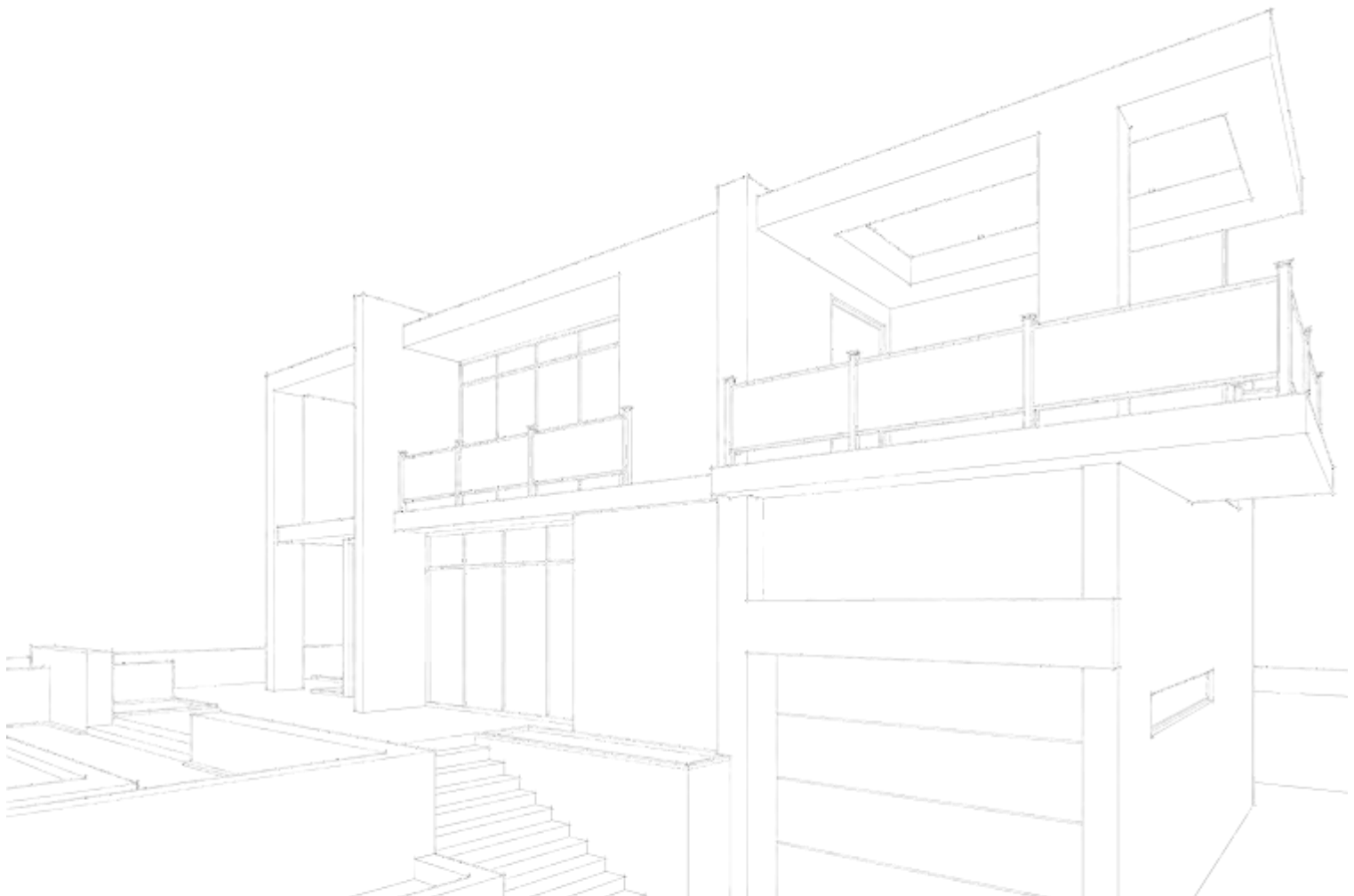
## FINAL SILICONE PLASTER

*Pasty silicone binder based top plaster*



**maintaining façade  
surfaces:**

Unacceptable impurities and dust can be removed by dusting or a light jet of water, and stubborn stains can be removed by gentle rubbing with a cloth soaked in a water solution with mild universal cleaning agents. Regular façade maintenance is carried out by recoating with façade paint such as *Fasena silicione* which extends the life of each façade system.



## Technical data sheet

# FINAL SILICONE PLASTER

*Pasty silicone binder based top plaster*



<b>safety measures:</b>	General rules for construction work must be complied with. Keep out of reach of children. Wear protective equipment. Before use, read the Technical and Safety Sheet of the product.
<b>transport and storage:</b>	Store in dry and aired areas away from direct sunlight at temperatures ranging from +5 °C +25 °C. Do not expose the product to direct sunlight, in winter protect from freezing.
<b>shelf life:</b>	1.5 years in unopened packaging.
<b>disposal of leftover product and packaging:</b>	Empty the packaging of its contents completely. Dispose of it at a recycling yard. Legal persons must deliver the packaging as packaging waste to a licenced waste collector.
<b>quality control:</b>	Product quality characteristics are determined by internal production specifications as well as European and Croatian standards. The product is under constant supervision of the factory quality control of Chromos-Svjetlost d.o.o.
<b>other information:</b>	Mechanical damage on dark colours causes the appearance of light stripes. This phenomenon is specific to dark colours and does not affect the quality of the coating.
<b>general remarks:</b>	<p>Technical values apply only to base products. Tinting paint can result in minor deviations from individual technical characteristics. Depending on the properties of the substrate and the method of application, minor deviations in colour compared to the colour chart are possible. The colour of the product must be checked on a small test surface before application, as we will not be able to accept any complaints later. Before using the product, the customer must check the colour of the product, and upon noticing any incompatibility, the customer must stop the application of the product and contact the manufacturer, otherwise a complaint will not be accepted.</p> <p>The technical data are the result of our technical knowledge and experience, and are provided with the intention of achieving optimal results when working with Chromos-Svjetlost products. The data do not contain any legal or secondary obligation on the part of the manufacturer nor do they release the customer from the obligation to verify the suitability of the product for a specific purpose. Due to the use of natural raw materials in our products, minor deviations from certain values are possible during individual deliveries. When applying the product on substrates that are not specified in corresponding documentation, consult the manufacturer. The manufacturer reserves the right to make further changes to the technical data sheet. Only the latest version is valid. Updated technical data sheets are available at <a href="http://www.chromos-svjetlost.hr">www.chromos-svjetlost.hr</a> or can be requested from the manufacturer via the contact e-mail listed below. For more detailed information, please contact our technical service. Before use, read the safety labels on the product packaging, while the Technical and Safety Sheets are available on request.</p> <p>August, 2021</p> <p>Quality and environmental protection management system certified by TUV Croatia; Certificate numbers: 44 100 134668 / 44 104 134668</p>

